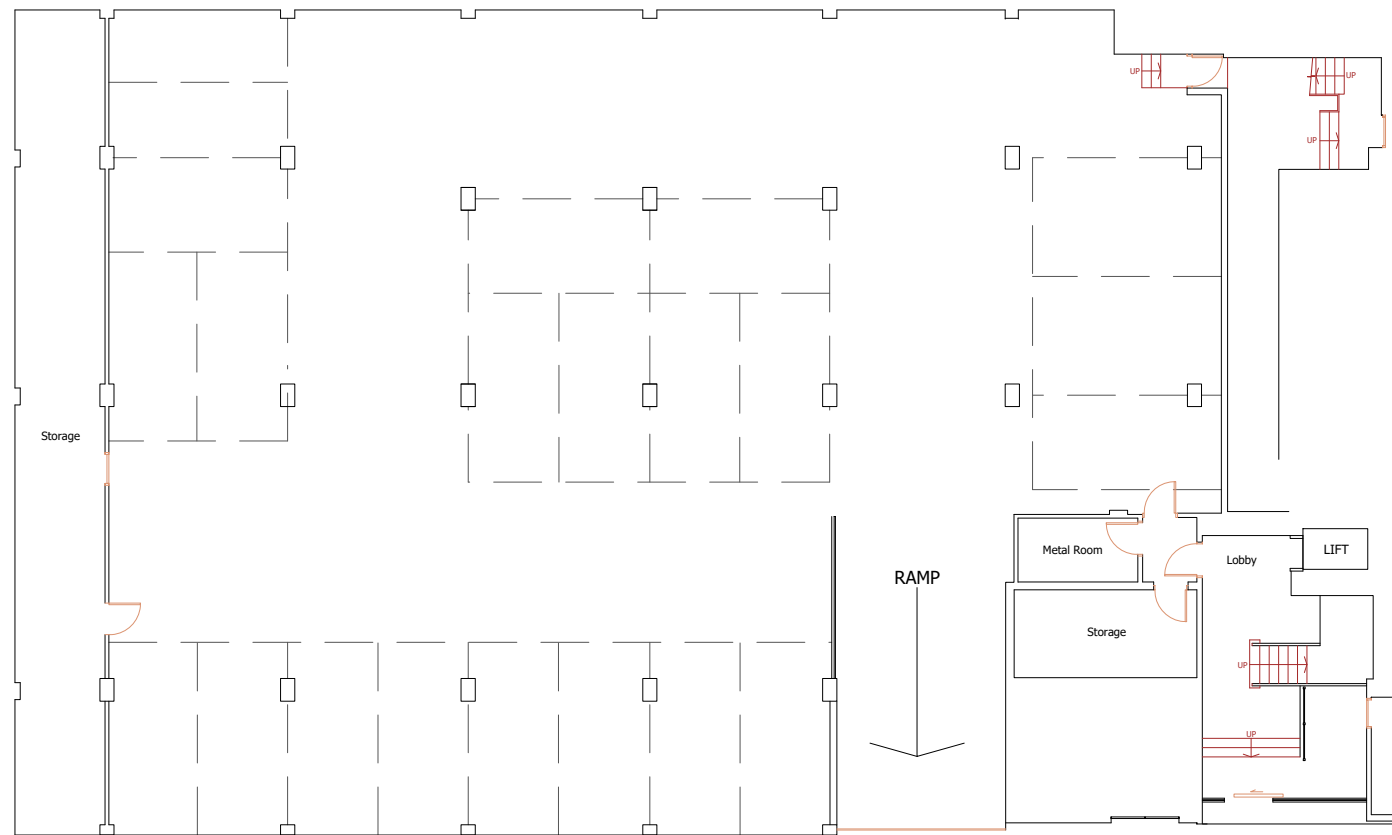
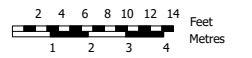


Mezzanine Floor



Ground Floor

Notes:



All measurements shown are in millimetres. All heights measured from local datum unless otherwise stated. Do not scale from document unless for planning purposes, all dimensions to be checked on site. Whilst we have taken care to measure every element of the property, we have not measured any areas that are hidden or concealed or where reasonable access is unavailable. The measured survey displayed here does not form part of a structural survey. No assumptions should be made with regards to the condition, construction type or material of any element shown.

copyright Trueplan (UK) Ltd 2024

Projects:

Mount Pleasant House,
2-6 Lonsdale Gardens,
Tunbridge Wells
TN1 1HJ

Drawing no.: 56028
Revision: 00
Drawn on: 19/04/24
Drawn by.: BC

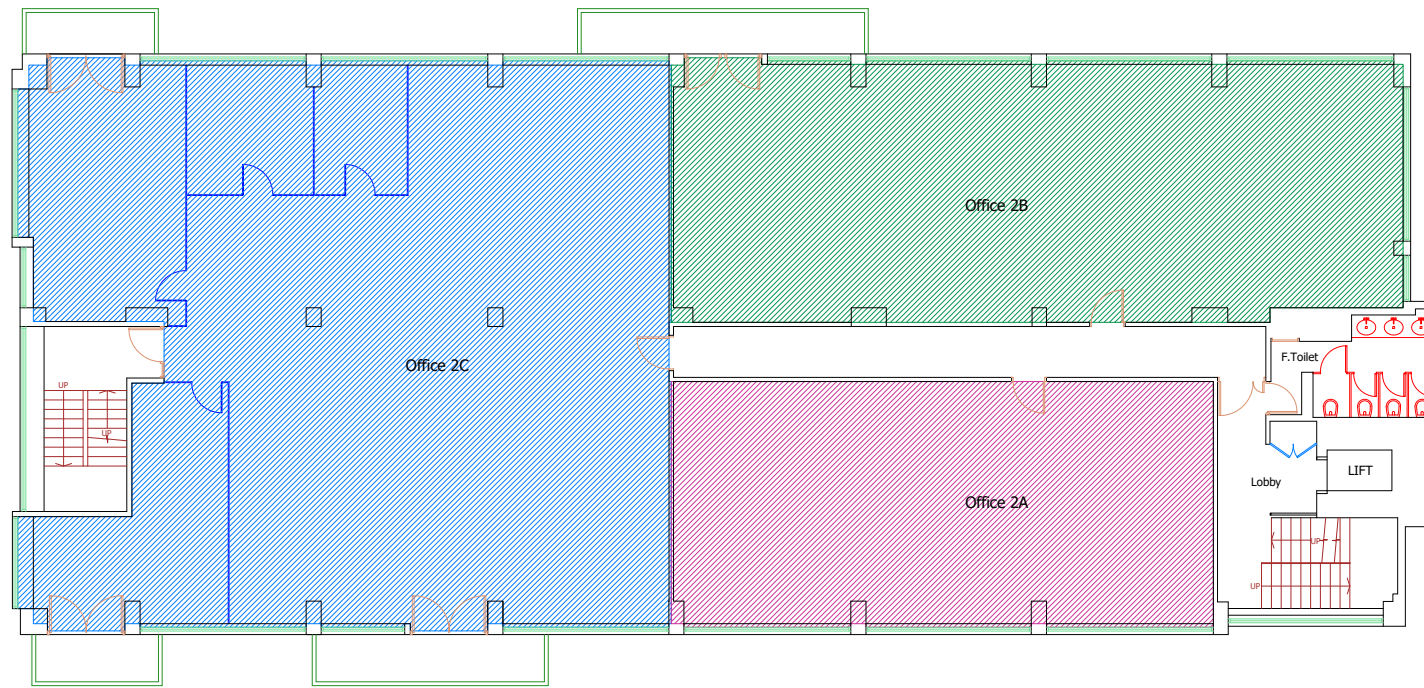
Client:
Durlings

Scale: @A3
Floorplans: 1:200

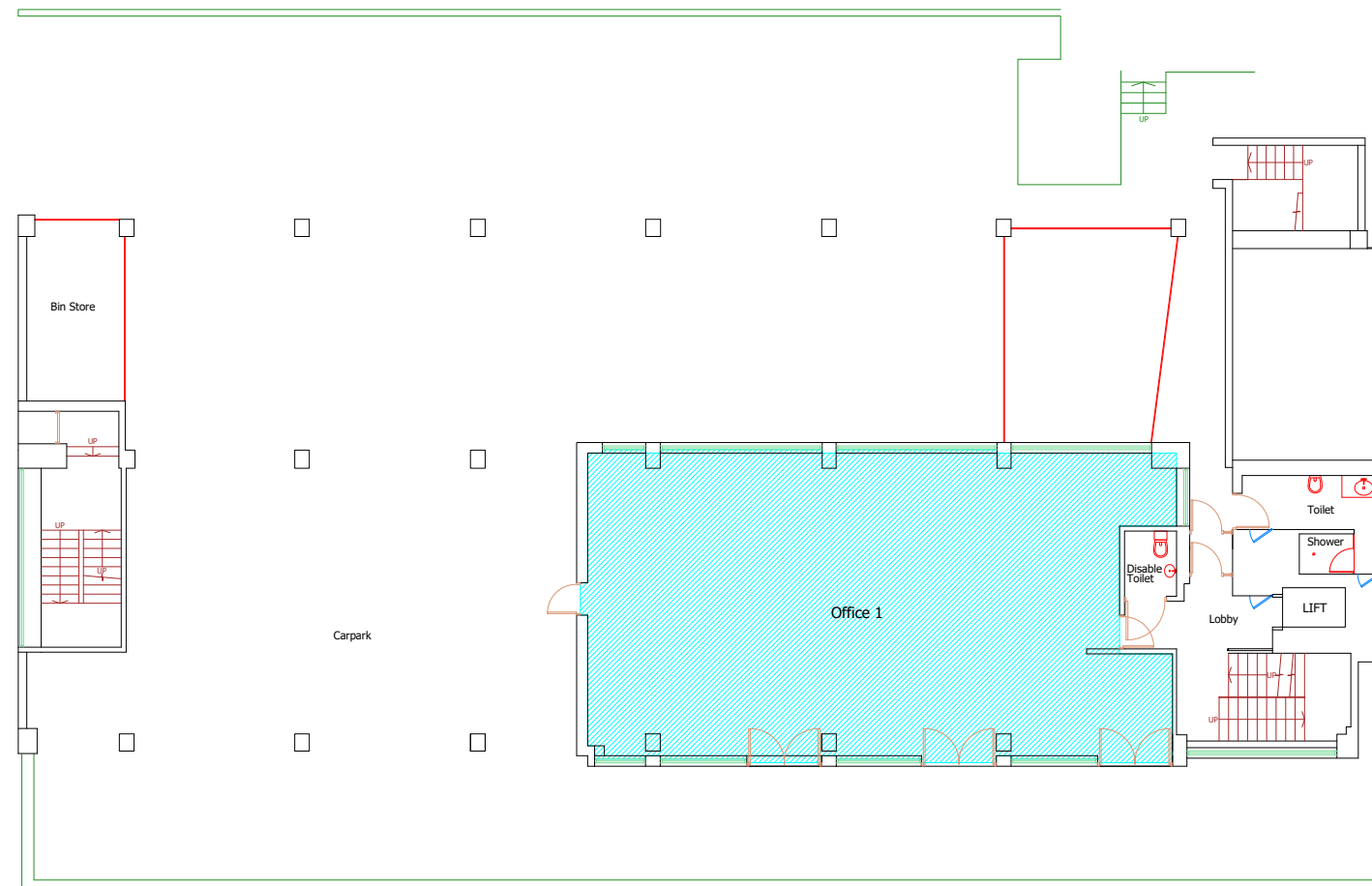


Trueplan (UK) Ltd
Bank Chambers
36 Mount Pleasant
Tunbridge Wells
Kent TN1 1RB
01892 614881

plans@trueplan.co.uk
www.trueplan.co.uk
@Trueplanuk
facebook.com/trueplan

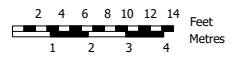


Second Floor
 Office 2A - IPMS 3 Office: 93.2 sqm
 Office 2B - IPMS 3 Office: 132.7 sqm
 Office 2C - IPMS 3 Office: 241.2 sqm



First Floor - IPMS 3 Office: 130.7 sqm

Notes:



All measurements shown are in millimetres. All heights measured from local datum unless otherwise stated. Do not scale from document unless for planning purposes, all dimensions to be checked on site. Whilst we have taken care to measure every element of the property, we have not measured any areas that are hidden or concealed or where reasonable access is unavailable. The measured survey displayed here does not form part of a structural survey. No assumptions should be made with regards to the condition, construction type or material of any element shown.

copyright Trueplan (UK) Ltd 2024

Projects:

Mount Pleasant House,
 2-6 Lonsdale Gardens,
 Tunbridge Wells
 TN1 1HJ

Drawing no.: 56028
 Revision: 00
 Drawn on: 19/04/24
 Drawn by.: BC

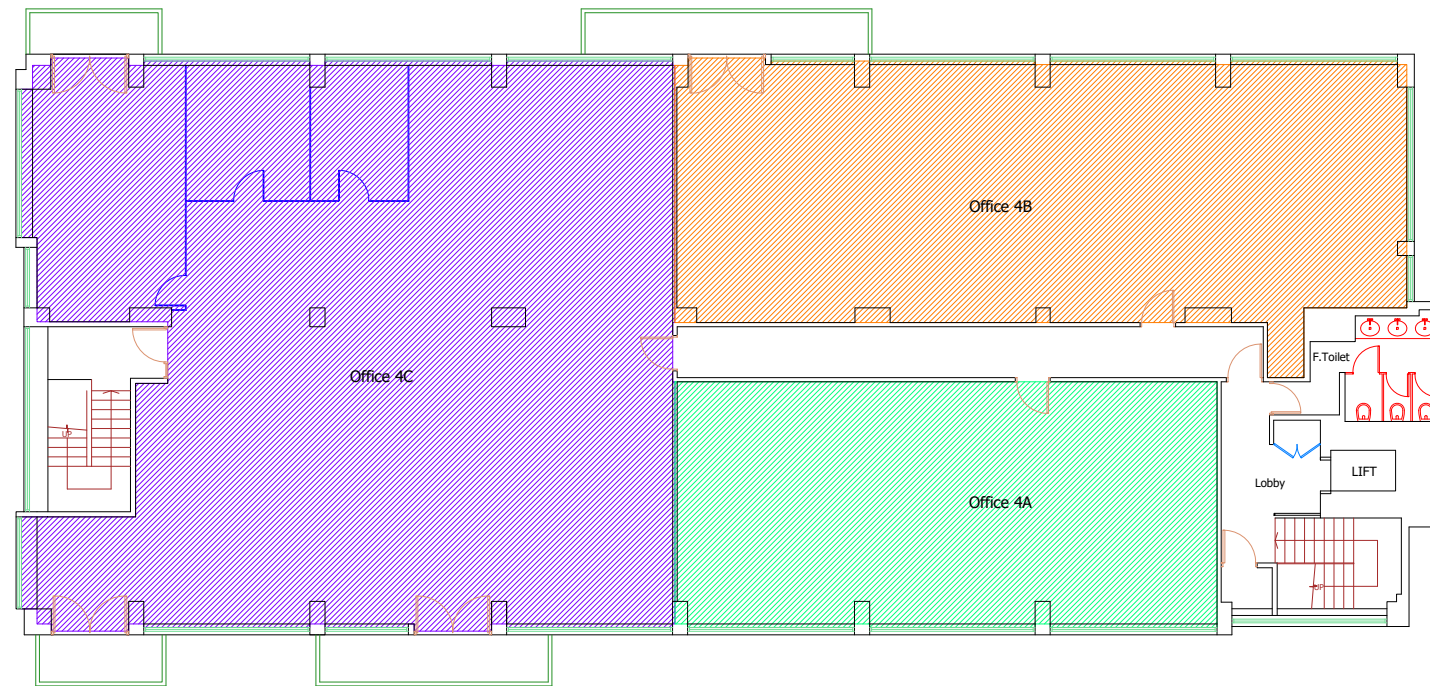
Client:
 Durlings

Scale: @A3
 Floorplans: 1:200

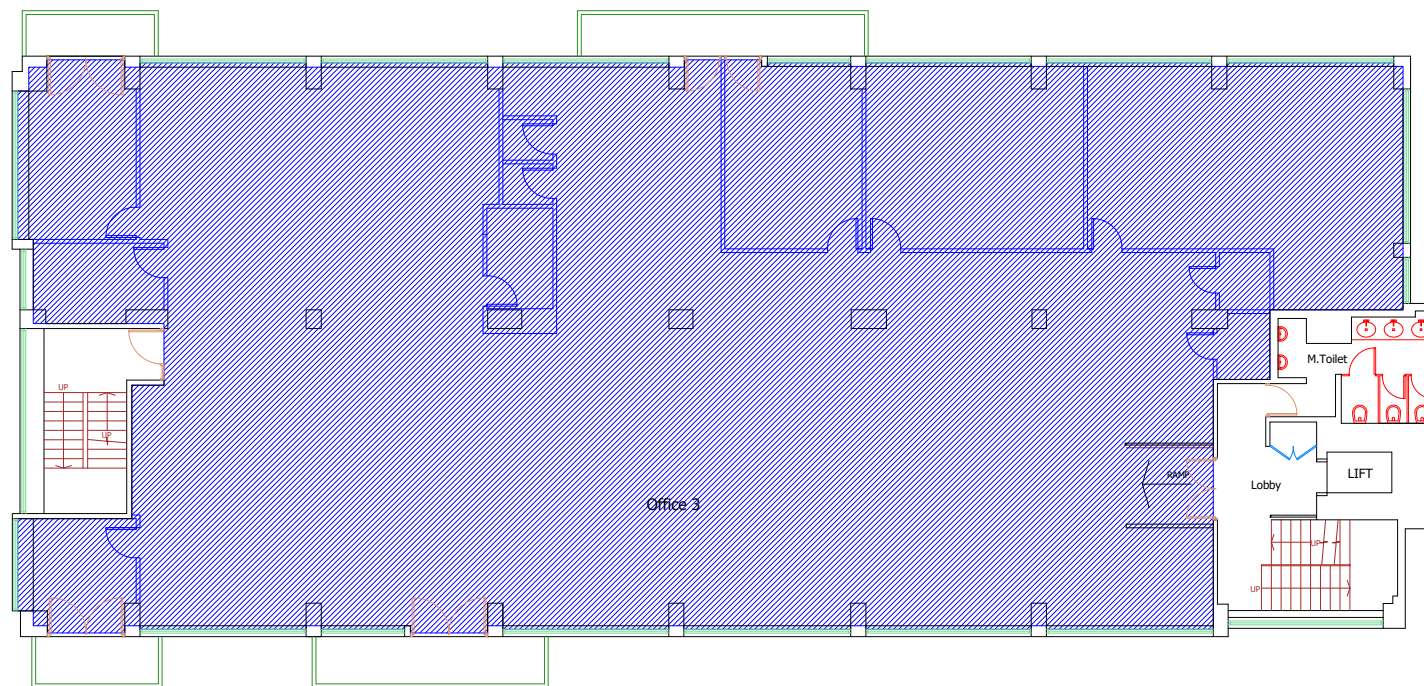


Trueplan (UK) Ltd
 Bank Chambers
 36 Mount Pleasant
 Tunbridge Wells
 Kent TN1 1RB
 01892 614881

plans@trueplan.co.uk
 www.trueplan.co.uk
 @Trueplanuk
 facebook.com/trueplan

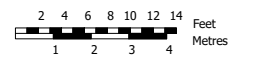


Fourth Floor
 Office 4A - IPMS 3 Office: 93.2 sqm
 Office 4B - IPMS 3 Office: 134.5 sqm
 Office 4C - IPMS 3 Office: 241.2 sqm



Third Floor - IPMS 3 Office: 492.1 sqm

Notes:



All measurements shown are in millimetres. All heights measured from local datum unless otherwise stated. Do not scale from document unless for planning purposes, all dimensions to be checked on site. Whilst we have taken care to measure every element of the property, we have not measured any areas that are hidden or concealed or where reasonable access is unavailable. The measured survey displayed here does not form part of a structural survey. No assumptions should be made with regards to the condition, construction type or material of any element shown.

copyright Trueplan (UK) Ltd 2024

Projects:

Mount Pleasant House,
 2-6 Lonsdale Gardens,
 Tunbridge Wells
 TN1 1HJ

Drawing no.: 56028
 Revision: 00
 Drawn on: 19/04/24
 Drawn by.: BC

Client:
 Durlings

Scale: @A3
 Floorplans: 1:200



Trueplan (UK) Ltd
 Bank Chambers
 36 Mount Pleasant
 Tunbridge Wells
 Kent TN1 1RB
 01892 614881

plans@trueplan.co.uk
 www.trueplan.co.uk
 @Trueplanuk
 facebook.com/trueplan