



chartered surveyors
and property consultants



Station Road • Paddock Wood • Kent TN12 6AB

Artist's impression

Preliminary Details - Commercial Space - For Sale / To Let - 2000 sq ft.

Location

This new development is situated in a central position, virtually opposite the town's main line train station with services to London taking about 50 minutes. Also a 2 minute walk to Commercial Road, the principal retail district. There is a Waitrose next to the train station. The M26 & M20 junction at Wrotham Heath is under 10 miles distant to the north via the A228 dual carriageway on the edge of the town.

Description

Newly built raised ground floor commercial / business space in a mixed-use development, with apartments over the three upper floors. There are also shared amenity spaces.

The space is suitable for a variety of uses – details on application.

The floor is capable of being predominately open plan or partitioned into separate areas.

****Completion anticipated May 2024****

Floor Area

Circa 2000 sq ft (185 sq m) – to be verified on completion.

Rent / Price

On application.

Terms

A new lease by arrangement.

Otherwise, a sale of the long leasehold interest – 999 years - will be considered.

Business Rates

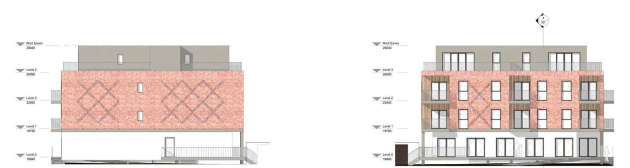
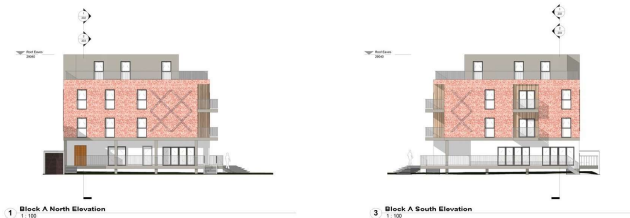
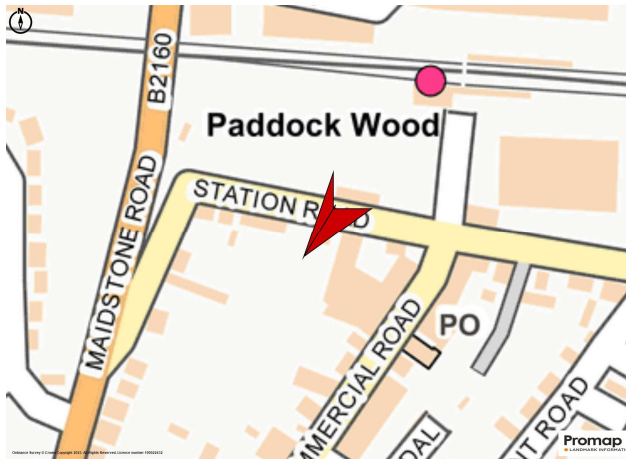
To be assessed.

Service Charge

On application.

Viewing Arrangements

Strictly by appointment and accompanied.



chartered surveyors
and property consultants

COMMERCIAL

Contact Rupert Farrant
or Julie Chalmers on
01892 552 500

rupert@durlings.co.uk
julie.chalmers@durlings.co.uk
www.durlings.co.uk



T – 01892 552500

Julie Chalmers – julie.chalmers@durlings.co.uk

Rupert Farrant – rupert@durlings.co.uk

22 Mount Ephraim Road

Tunbridge Wells

Kent TN1 1ED

