

# 64 Mount Pleasant Road

Shop - Gross Internal Area : 205.4 sq.m (2,210 sq.ft.)

Flat 1 - Gross Internal Area : 76.0 sq.m (818 sq.ft.)

Flat 2 - Gross Internal Area : 66.4 sq.m (714 sq.ft.)

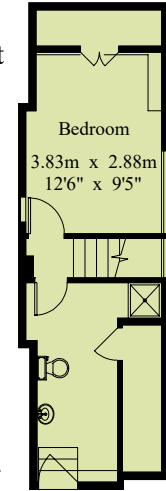
Flat 3 - Gross Internal Area : 98.8 sq.m (1,063 sq.ft.)

Total Building - Gross Internal Area : 484.9 sq.m (5,219 sq.ft.)

(Including Communal Areas)



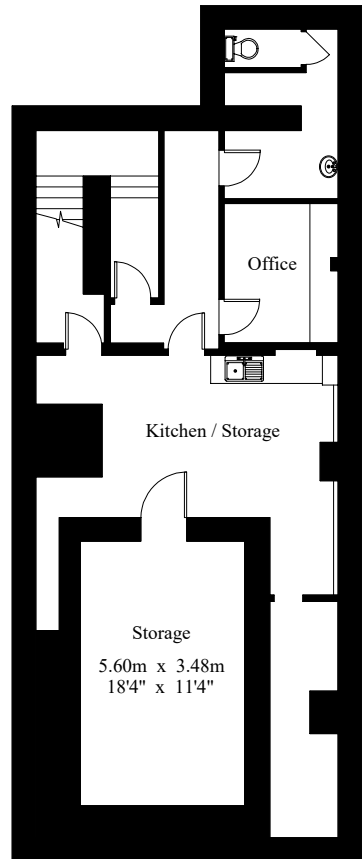
----- Restricted Height



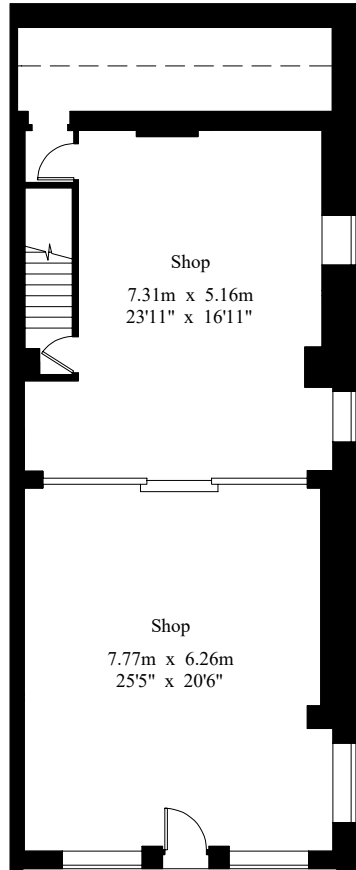
Fourth Floor

Flat 3

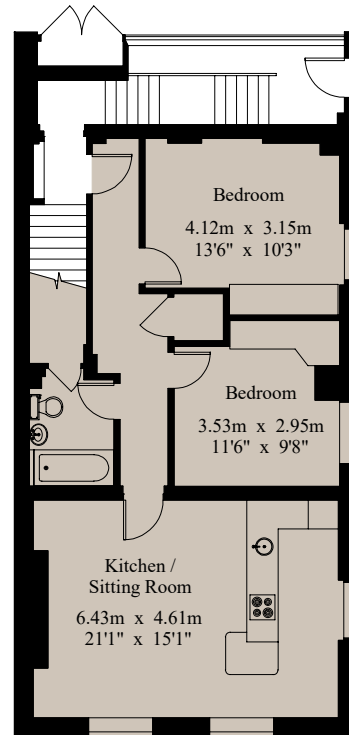
Access to roof



Basement

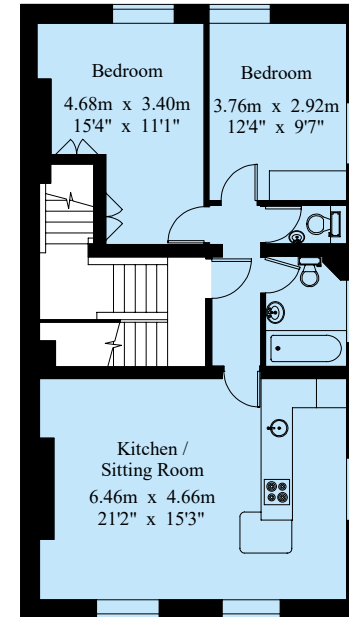


Ground Floor



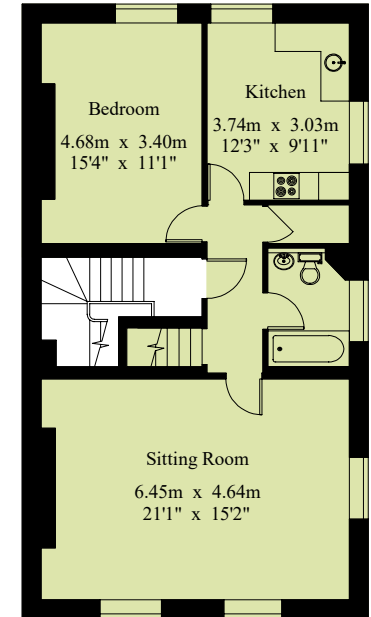
First Floor

Flat 1



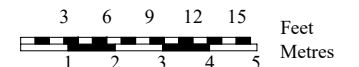
Second Floor

Flat 2



Third Floor

Flat 3



For Identification Purposes Only.

© 2023 Trueplan (UK) Limited (01892) 614 881