




durlings

chartered surveyors  
and property consultants



Indicative Site Boundary

The Old Dairy • Barden Road • Speldhurst (Tunbridge Wells) • Kent TN3 0LH

Barn Style Office Development Site . **For Sale** . Planning Consent for 6600 sq ft





chartered surveyors  
and property consultants

## Location

Barden Road runs from Speldhurst north towards Bidborough, and approximately 5 miles to the west of Tunbridge Wells.

## Description

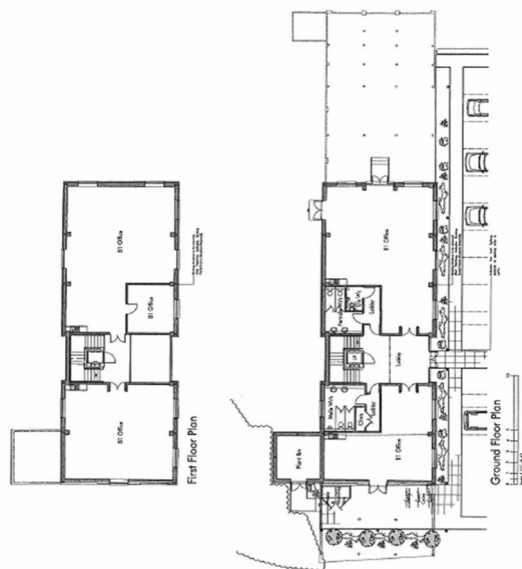
A redundant former agricultural building on a site of approximately 0.6 acres, with full planning consent to convert and substantially develop the existing barn to provide a detached office building of approximately 6600 sq ft and associated parking area and landscaping. Planning reference: - TW/14/506064/FULL.

## Tenure

Freehold with vacant possession

## Guide Price

£500,000



## Land and Development

Contact Rupert Farrant  
or Julie Chalmers on  
**01892 552 500**  
rupert@durlings.co.uk  
julie.chalmers@durlings.co.uk  
www.durlings.co.uk

22 Mount Ephraim Road, Tunbridge Wells, Kent  
TN1 1ED

Disclaimer: see website – durlings.co.uk

